



**Interior Features**

- Decorator Designed Interiors with Two Tone Paint
- 9' Ceilings with Crown Molding
- Ceiling Fans With Lights
- Track Lighting in Dining Area
- Window Coverings
- GE Appliances, Including Dishwashers Microwaves, Refrigerators with Icemakers
- Full-size Washer and Dryer Connections
- Large Walk-in and Reach-in Closets with Wire Shelving
- Patios and Balconies with Outside Storage
- Multiple Cable and Telephone Outlets
- Pre-wired for High Speed Internet Access

\*In Select Apartment Homes

**Extraordinary Services**

- Professional management
- Community Services
- 24-hr Emergency Maintenance
- Resident Computer Services with High Speed Internet Access Limited Faxing and Copying

**Community Amenities**

- Gated Community
- Clubhouse with Fully Equipped Kitchen and Flat screen TV
- Activity Center with Kitchen
- Computer Center
- Laundry Center
- Fitness Center
- Beach Entry Pool
- Barbeque, Picnic Areas and Playground



Professionally managed by:



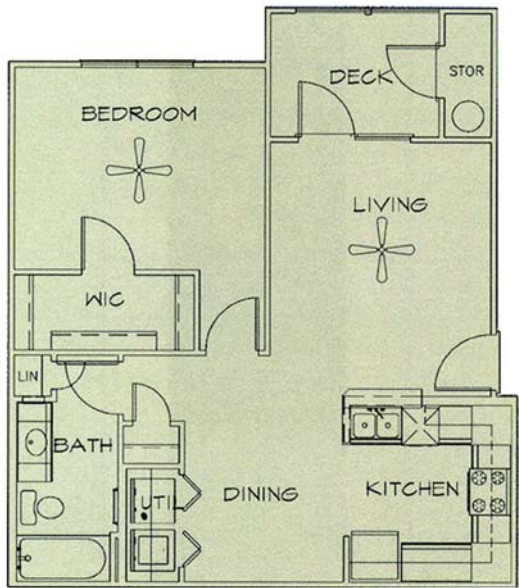
901 S. Navigation Blvd.  
 Corpus Christi, TX 78405  
[www. navigationpointeapts.com](http://www.navigationpointeapts.com)  
[manager@ navigationpointeapts.com](mailto:manager@navigationpointeapts.com)

**(361) 289-5575**



901 S. Navigation Blvd.  
Corpus Christi, TX 78405

**(361) 289-5575**



1 Bdrm / 1 Bath 727 Sq. Ft.\*

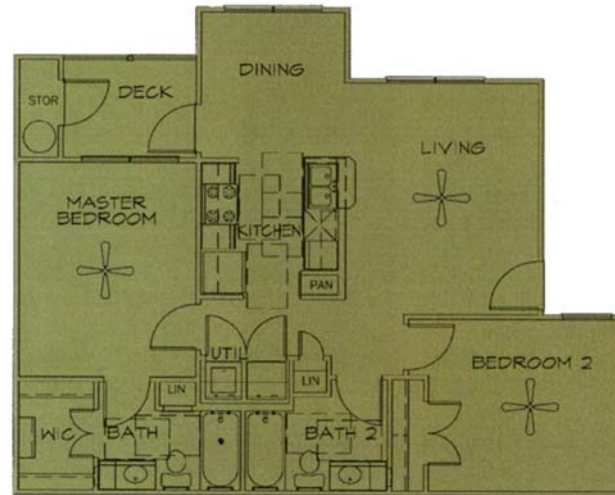
**RENT** \_\_\_\_\_

**DEPOSIT** \_\_\_\_\_

2 Bdrm / 2 Bath 920 Sq. Ft.\*

**RENT** \_\_\_\_\_

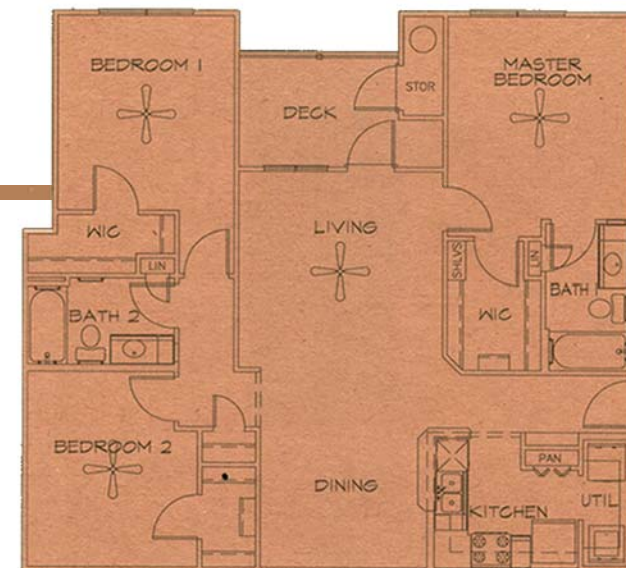
**DEPOSIT** \_\_\_\_\_



**RENT** \_\_\_\_\_

**DEPOSIT** \_\_\_\_\_

3 Bdrm / 2 Bath 1,261 Sq. Ft.\*



**\*All square footage is approximate**

